



**Cordless Angle Grinder Series  
with Variable speed**



# 40V *Li-ion* max

**Delivers the same power as 1,000W corded grinders**



**AWS**

**BL  
MOTOR**



**AFT**

**XPT**

GA021G, GA022G, GA023G,  
GA027G, GA028G, GA029G,



## Switch on the tool



**Vacuum cleaner  
is activated**



**Auto-start Wireless System**

The wireless activation function enables clean and comfortable operation.

By connecting a supported tool to the cleaner, you can run the cleaner automatically along with the switch operation of the tool.



about

**40%  
UP**

### Cutting speed

Cutting depth: 20mm ( concrete )

<b>GA021G</b>	<b>140</b>
18V Predecessor Model	100
Slow	Fast

### Work amount on a full battery charge<sup>\*1</sup>

Battery: BL4040

about **7 m**  
Cutting depth: 20mm

<sup>\*1</sup> The test results depend to a great extent on the test material etc.

## Accessories Dust collection wheel guard

for offset diamond wheel

for diamond wheel



Part No.	Size	Type
191F81-2	125mm	for offset diamond wheel
191G06-2	125mm	for diamond wheel



## Wheel cover

for cut-off wheel



Part No.	Size
162555-4	100mm
162556-2	115mm
162557-0/140N45-1	125mm



## Variable speed control dial (3,000 - 8,500 RPM)

Matches the speed to your application.

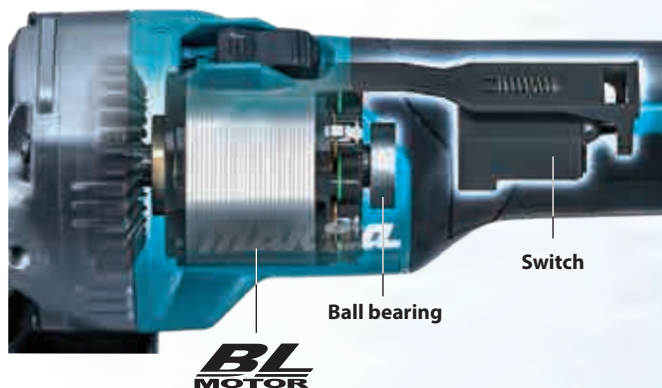


	No load speed (RPM)	Cutting / Rough grinding	Grinding / Finish grinding	Rust removal / Paint removal	Stainless steel polishing
1	3,000				✓
2	4,500			✓	✓
3	6,000		✓	✓	✓
4	7,500		✓		
5	8,500	✓			



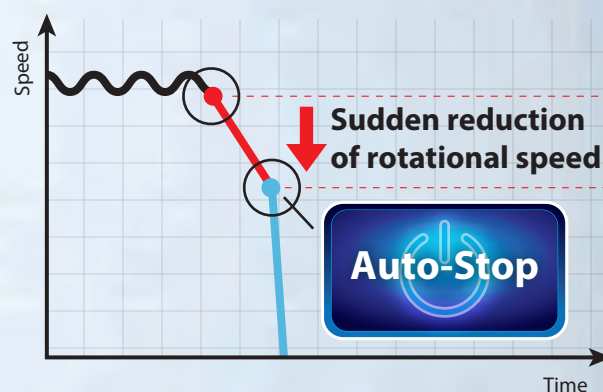
## High durability

- Largest ball bearing supports the motor.
- New switch design to reduce contact weariness.



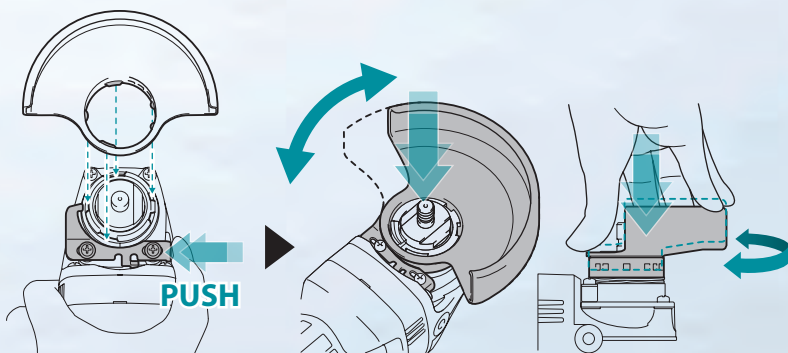
## AFT Active Feedback sensing Technology

Shuts down the tool, if the rotation speed suddenly slows down.



## New toolless wheel cover (Slide lever style)

allows for fast and easy angle adjustment and installation / removal of wheel cover.



### Electric brake

maximizes productivity and increases safety for operator

(GA021G/GA022G/GA023G/GA027G/GA028G/GA029G)



### Extreme Protection Technology

is engineered for improved dust and water resistance



## Cutting Wheel Cover Attachment for cutting work

can be attached to the wheel cover for grinding with easy assembling.



Part No.	Size
199709-0	115mm
199710-5	125mm



## Vibration proof grip set






Part No. 194514-0



## Slide Switch Type



	GA021G 	GA022G 	GA023G 
Wheel Diameter	100 mm (4")	115 mm (4-1/2")	125 mm (5")
Hole Diameter	16 mm (5/8")	22.23 mm (7/8")	22.23 mm (7/8")
No Load Speed (RPM)	3,000 - 8,500	3,000 - 8,500	3,000 - 8,500
Vibration Level	5.0 m/s <sup>2</sup>	5.5 m/s <sup>2</sup>	6.5 m/s <sup>2</sup>
Surface Grinding w/ Normal Side Grip:	2.5 m/s <sup>2</sup> or less	2.5 m/s <sup>2</sup> or less	2.5 m/s <sup>2</sup>
Disc Sanding w/ Normal Side Grip:	81 dB(A) / 92 dB(A)	81 dB(A) / 92 dB(A)	81 dB(A) / 92 dB(A)
Sound Pressure Level / Sound Power Level	413x117x150 mm (16-1/4"x4-5/8"x5-7/8")	413x130x156 mm (16-1/4"x5-1/8"x6-1/8")	413x140x156 mm (16-1/4"x5-1/2"x6-1/8")
Dimensions (L x W x H) with/ BL4025:	425x117x162 mm (16-3/4"x4-5/8"x6-3/8")	425x130x168 mm (16-3/4"x5-1/8"x6-5/8")	425x140x168 mm (16-3/4"x5-1/2"x6-5/8")
with/ BL4040:	2.8 - 3.4 kg (6.2 - 7.5 lbs.)	3.0 - 3.6 kg (6.6 - 7.9 lbs.)	3.0 - 4.4 kg (6.6 - 9.7 lbs.)
Net weight			

	GA024G	GA025G	GA026G
Wheel Diameter	100 mm (4")	115 mm (4-1/2")	125 mm (5")
Hole Diameter	16 mm (5/8")	22.23 mm (7/8")	22.23 mm (7/8")
No Load Speed (RPM)	3,000 - 8,500	3,000 - 8,500	3,000 - 8,500
Vibration Level	5.0 m/s <sup>2</sup>	5.5 m/s <sup>2</sup>	6.5 m/s <sup>2</sup>
Surface Grinding w/ Normal Side Grip:	2.5 m/s <sup>2</sup> or less	2.5 m/s <sup>2</sup> or less	2.5 m/s <sup>2</sup>
Disc Sanding w/ Normal Side Grip:	81 dB(A) / 92 dB(A)	81 dB(A) / 92 dB(A)	81 dB(A) / 92 dB(A)
Sound Pressure Level / Sound Power Level	413x117x150 mm (16-1/4"x4-5/8"x5-7/8")	413x130x152 mm (16-1/4"x5-1/8"x6")	413x140x156 mm (16-1/4"x5-1/2"x6")
Dimensions (L x W x H) with/ BL4025:	425x117x162 mm (16-3/4"x4-5/8"x6-1/4")	425x130x165 mm (16-3/4"x5-1/8"x6-1/2")	425x140x165 mm (16-3/4"x5-1/2"x6-1/2")
with/ BL4040:	2.8 - 3.4 kg (6.2 - 7.5 lbs.)	2.9 - 3.5 kg (6.4 - 7.7 lbs.)	2.9 - 4.4 kg (6.4 - 9.7 lbs.)
Net weight			




 Variable Speed
  Brake
  Soft Start
  Dust Collection
  Carrying Case

▲ GA021G, GA022G, GA023G

**Standard equipment :** Grinding Wheel, Toolless Wheel Cover, Side Grip, Lock Nut Wrench, Battery, Charger

## Paddle Switch Type



	GA027G 	GA028G 	GA029G 
Wheel Diameter	100 mm (4")	115 mm (4-1/2")	125 mm (5")
Hole Diameter	16 mm (5/8")	22.23 mm (7/8")	22.23 mm (7/8")
No Load Speed (RPM)	3,000 - 8,500	3,000 - 8,500	3,000 - 8,500
Vibration Level	4.5 m/s <sup>2</sup>	5.0 m/s <sup>2</sup>	6.0 m/s <sup>2</sup>
Surface Grinding w/ Normal Side Grip:	2.5 m/s <sup>2</sup> or less	2.5 m/s <sup>2</sup>	3.0 m/s <sup>2</sup>
Disc Sanding w/ Normal Side Grip:	81 dB(A) / 92 dB(A)	81 dB(A) / 92 dB(A)	82 dB(A) / 93 dB(A)
Sound Pressure Level / Sound Power Level	413x117x150 mm (16-1/4"x4-5/8"x5-7/8")	413x130x156 mm (16-1/4"x5-1/8"x6-1/8")	413x140x156 mm (16-1/4"x5-1/2"x6-1/8")
Dimensions (L x W x H) with/ BL4025:	425x117x162 mm (16-3/4"x4-5/8"x6-3/8")	425x130x168 mm (16-3/4"x5-1/8"x6-5/8")	425x140x168 mm (16-3/4"x5-1/2"x6-5/8")
with/ BL4040:	2.9 - 3.4 kg (6.4 - 7.5 lbs.)	3.0 - 3.6 kg (6.6 - 7.9 lbs.)	3.0 - 4.5 kg (6.6 - 9.9 lbs.)
Net weight			

	GA030G	GA031G	GA032G
Wheel Diameter	100 mm (4")	115 mm (4-1/2")	125 mm (5")
Hole Diameter	16 mm (5/8")	22.23 mm (7/8")	22.23 mm (7/8")
No Load Speed (RPM)	3,000 - 8,500	3,000 - 8,500	3,000 - 8,500
Vibration Level	4.5 m/s <sup>2</sup>	5.0 m/s <sup>2</sup>	6.0 m/s <sup>2</sup>
Surface Grinding w/ Normal Side Grip:	2.5 m/s <sup>2</sup> or less	2.5 m/s <sup>2</sup> or less	3.0 m/s <sup>2</sup>
Disc Sanding w/ Normal Side Grip:	81 dB(A) / 92 dB(A)	81 dB(A) / 92 dB(A)	82 dB(A) / 93 dB(A)
Sound Pressure Level / Sound Power Level	413x117x146 mm (16-1/4"x4-5/8"x5-3/4")	413x130x152 mm (16-1/4"x5-1/8"x6")	413x140x152 mm (16-1/4"x5-1/2"x6")
Dimensions (L x W x H) with/ BL4025:	425x117x158 mm (16-3/4"x4-5/8"x6-1/4")	425x130x165 mm (16-3/4"x5-1/8"x6-1/2")	425x140x165 mm (16-3/4"x5-1/2"x6-1/2")
with/ BL4040:	2.8 - 3.4 kg (6.2 - 7.5 lbs.)	2.9 - 3.6 kg (6.4 - 7.9 lbs.)	3.0 - 4.4 kg (6.6 - 9.7 lbs.)
Net weight			

 Variable Speed
  Brake
  Soft Start
  Dust Collection
  Carrying Case

▲ GA027G, GA028G, GA029G

**Standard equipment :** Grinding Wheel, Toolless Wheel Cover, Side Grip, Lock Nut Wrench, Battery, Charger

## Product Comparison List

Model No.			No load speed (rpm)	Switch	AWS	BL motor	AFT	Brake	XPT	Anti-restart function
100mm	115mm	125mm								
GA021G <b>NEW</b>	GA022G <b>NEW</b>	GA023G <b>NEW</b>	3,000 - 8,500	Slide	●	●	●	●	●	●
GA024G <b>NEW</b>	GA025G <b>NEW</b>	GA026G <b>NEW</b>	3,000 - 8,500	Slide	●	●	●	●	●	●
GA003G	GA004G	GA005G	8,500	Slide		●	●	●	●	●
GA006G	GA007G	GA008G	8,500	Slide		●	●		●	●
GA027G <b>NEW</b>	GA028G <b>NEW</b>	GA029G <b>NEW</b>	3,000 - 8,500	Paddle	●	●	●	●	●	●
GA030G <b>NEW</b>	GA031G <b>NEW</b>	GA032G <b>NEW</b>	3,000 - 8,500	Paddle	●	●	●		●	●
GA011G	GA012G	GA013G	8,500	Paddle		●	●	●	●	●
GA014G	GA015G	GA016G	8,500	Paddle		●	●		●	●

The weight may differ depending on the attachment(s), including the battery cartridge. The lightest and heaviest combination, according to EPTA-Procedure 01/2014, are shown in the table.  
Items of standard equipment and specifications may vary by country or area.

# Makita Corporation

3-11-8 Sumiyoshi-cho, Anjo, Aichi, 446-8502 Japan

PRINTED IN JAPAN 202005